

Updates in Conductive Hearing Loss

Emily Z. Stucken, MD

The Michigan Otolaryngological Society

July 18-20, 2019



MICHIGAN MEDICINE
UNIVERSITY OF MICHIGAN

Disclosures

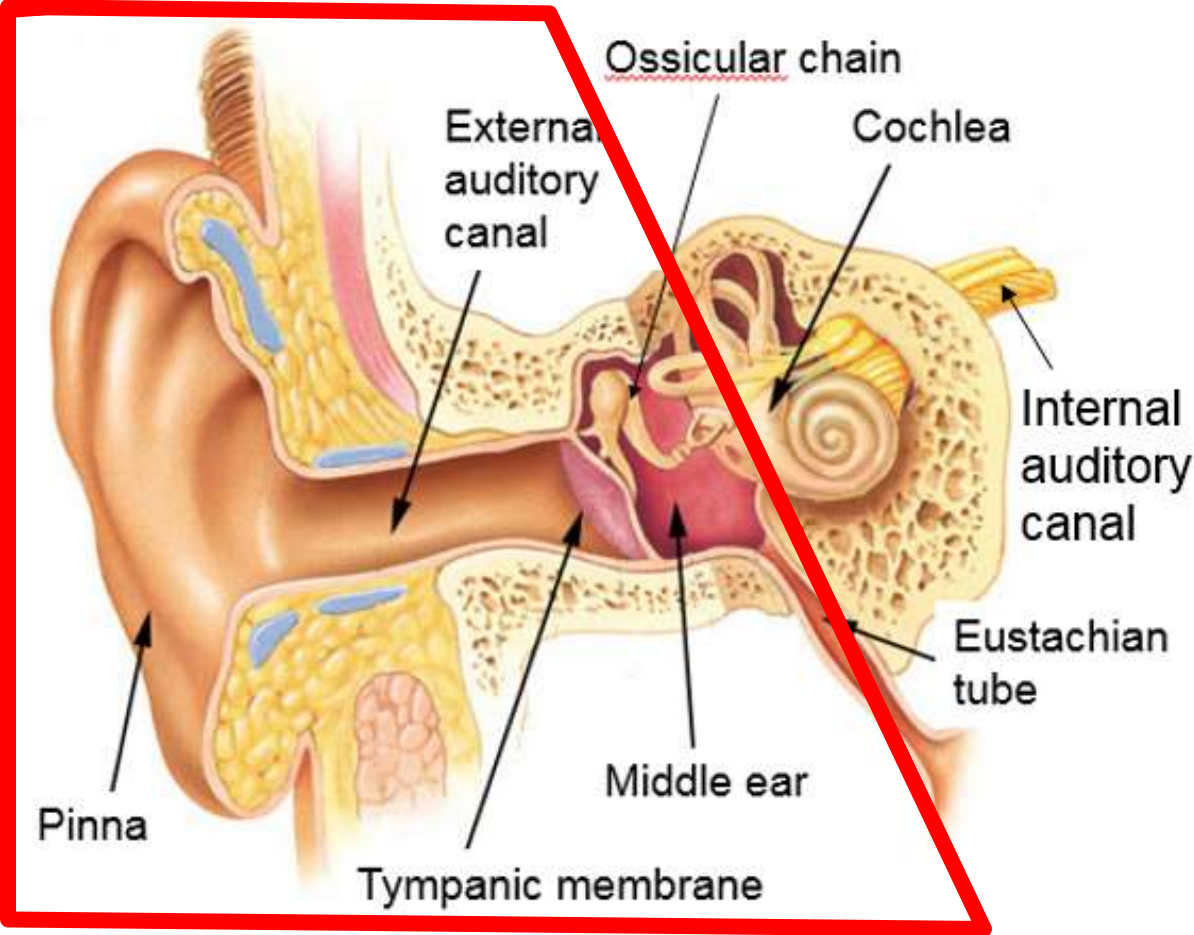
- I have no disclosures

Learning Objectives

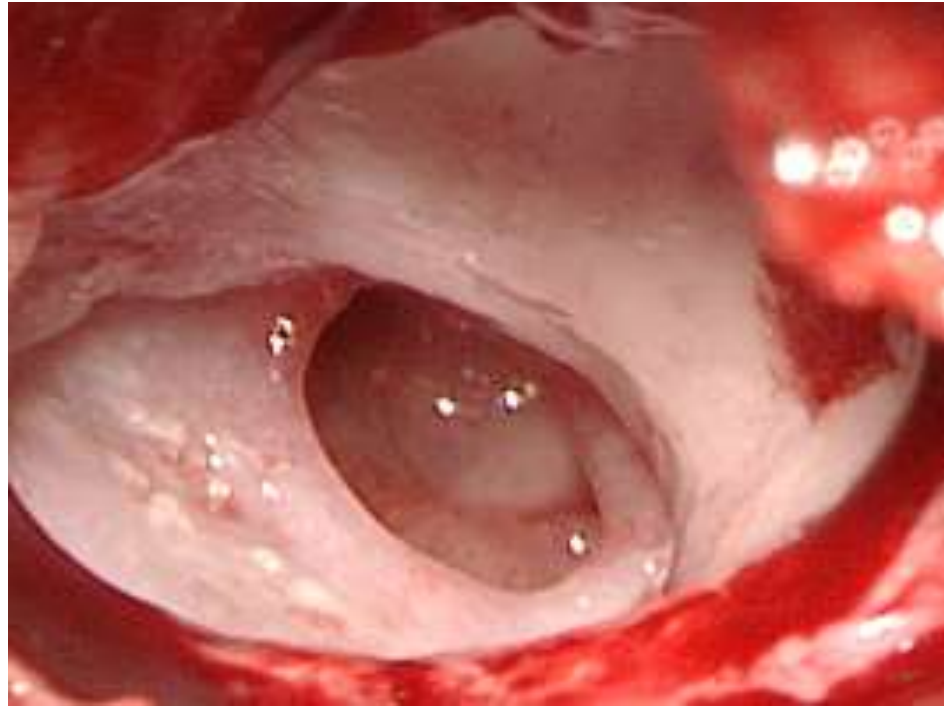
- Discuss diagnoses that may lead to conductive hearing loss (CHL)
- Describe surgical and nonsurgical management of CHL
- Describe current and emerging technologies available for CHL



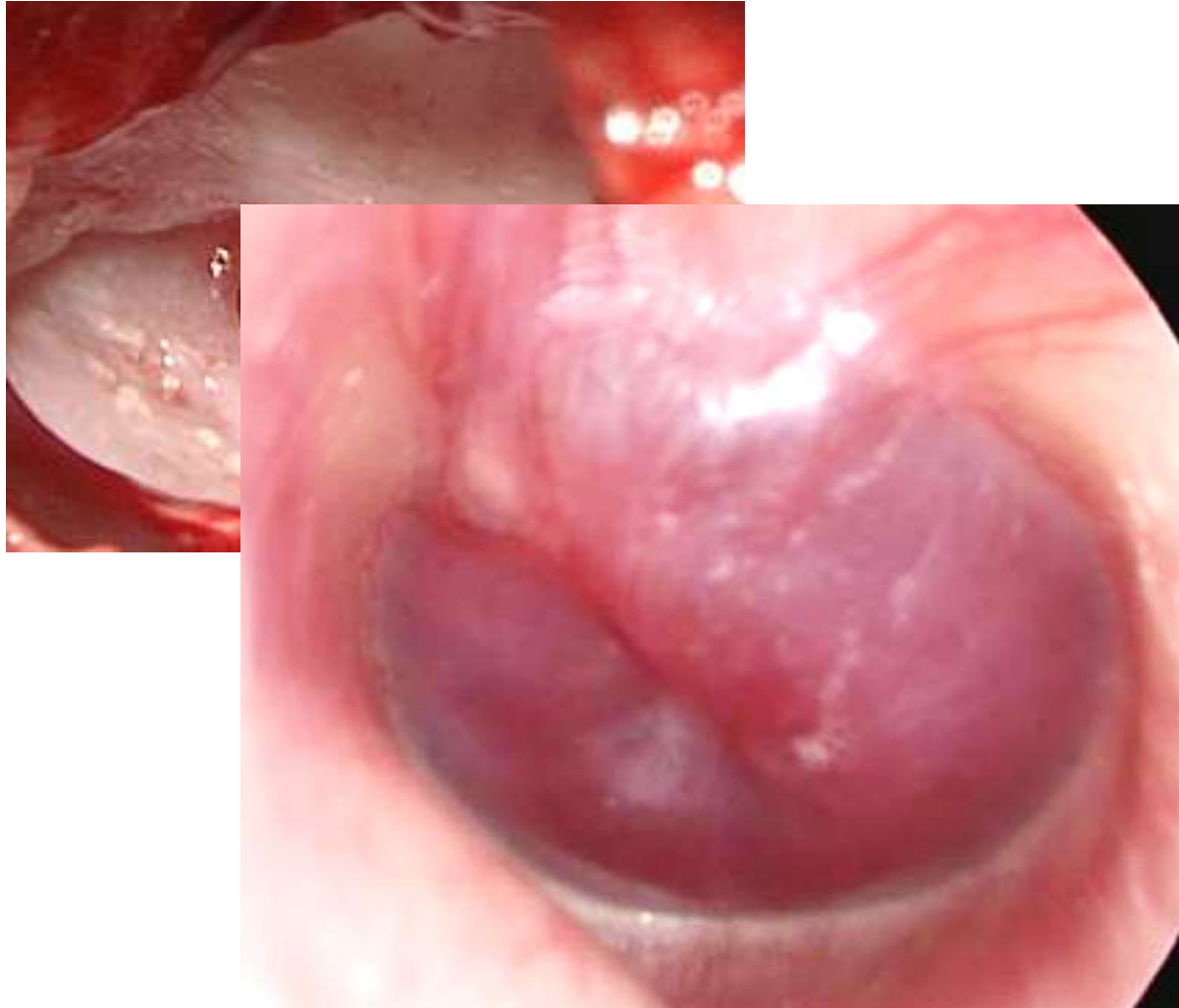
Conductive Hearing Loss



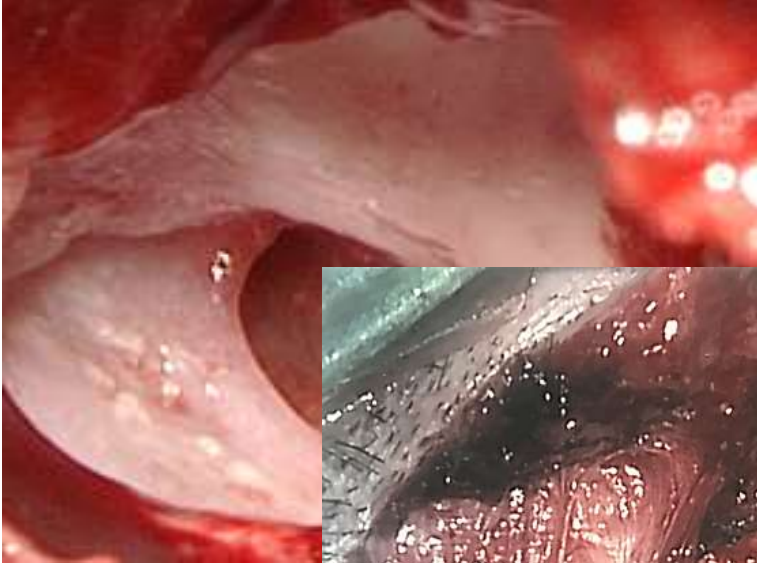
Conductive Hearing Loss



Conductive Hearing Loss



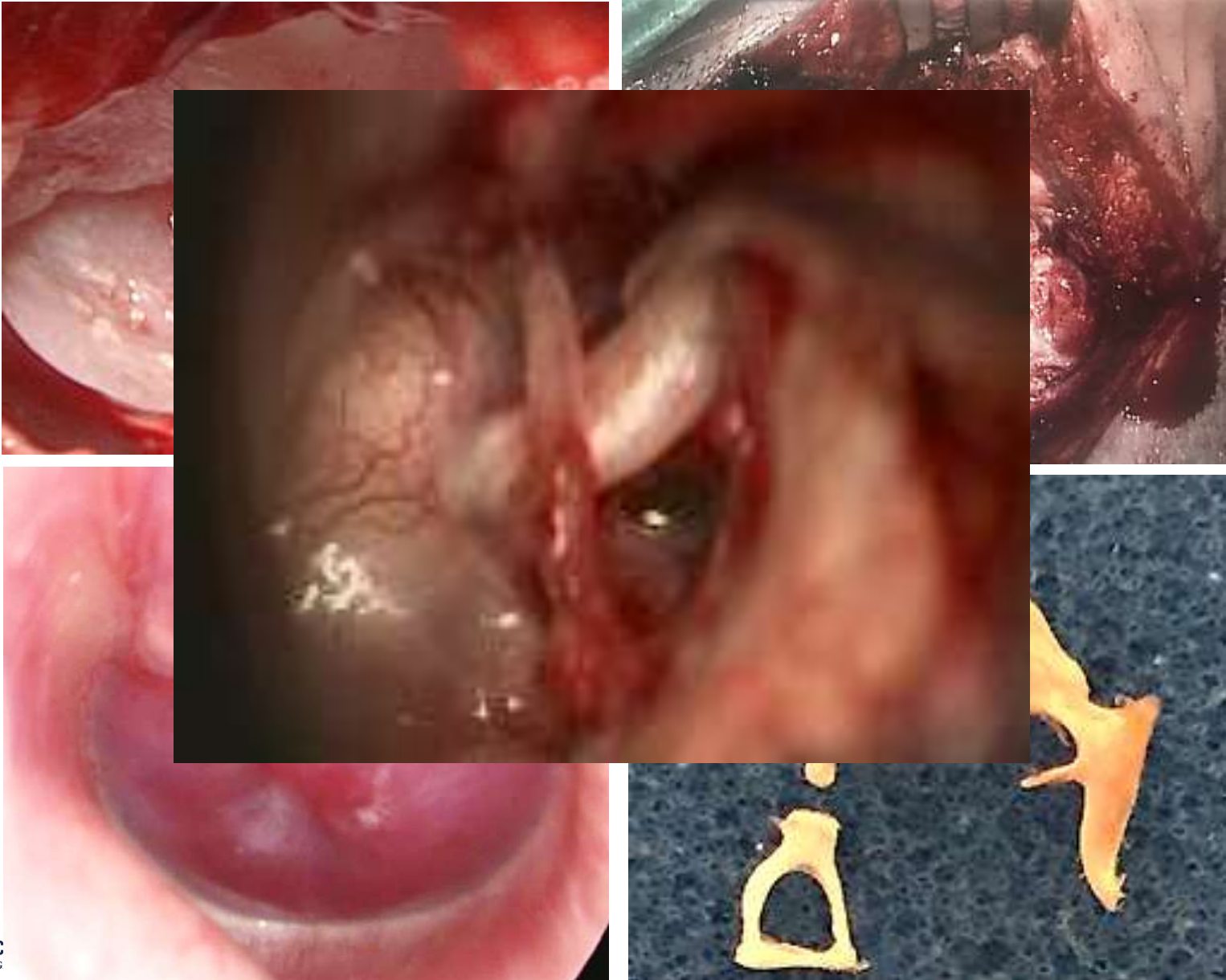
Conductive Hearing Loss



Conductive Hearing Loss



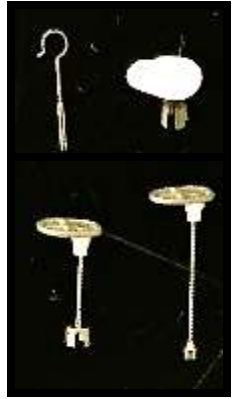
Conductive Hearing Loss



Conductive Hearing Loss - Management



Conductive Hearing Loss - Management



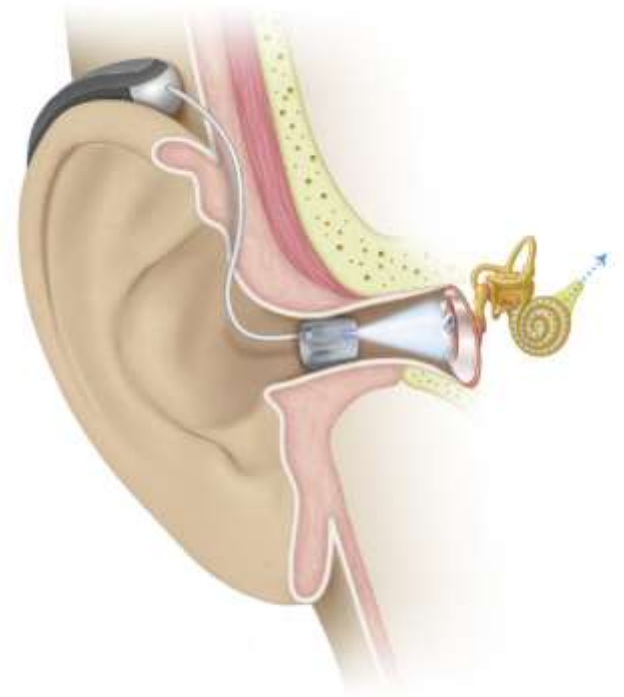
Extended-Wear Hearing Technology

- Lyric
 - Placed into bony ear canal in the office
 - Worn for 4 months
 - Mild to moderately-severe hearing loss



Extended-Wear Hearing Technology

- Earlens
 - Direct umbo stimulation
 - Mild to severe hearing loss
 - 3 month visits after initial fitting



Cartilage Conduction Hearing Device

- Cartilage conduction hearing device
 - Sound transmitted through aural cartilage by a transducer that rests on the tragus
 - Atresia
 - Mild to severe conductive hearing loss

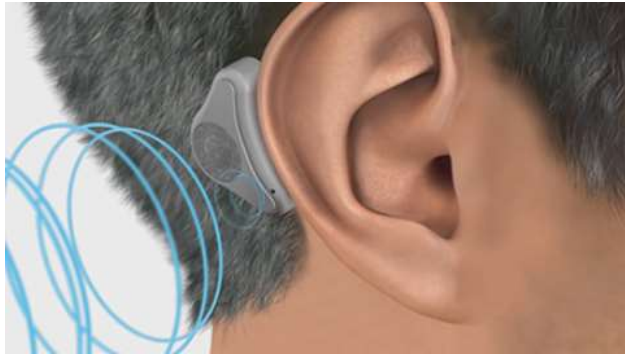


Nishimura T, Hosoi H, Saito O, Shimokura R, Yamanaka T, Kitahara T. Cartilage conduction hearing aids for severe conduction hearing loss. *Otol Neurotol* 2017;39:65-72.



Bone Conduction Hearing Devices - Nonsurgical

- ADHEAR
 - Non-surgical bone conduction system
 - Adhesive adapter placed behind ear
 - Conductive hearing loss or single-sided deafness



<https://www.medel.com/us/adhear/>

Bone Anchored Hearing Devices - Surgical

- Percutaneous
 - Baha connect
 - Ponto
- Transcutaneous
 - Sophono
 - Baha attract
 - Bonebridge
 - Osia
 - Sentio



Implantable Hearing Aids

- Semi-implantable
 - Vibrant Soundbridge
 - Maxum
- Fully-implantable
 - Carina
 - Esteem



Updates in Conductive Hearing Loss

Questions?

